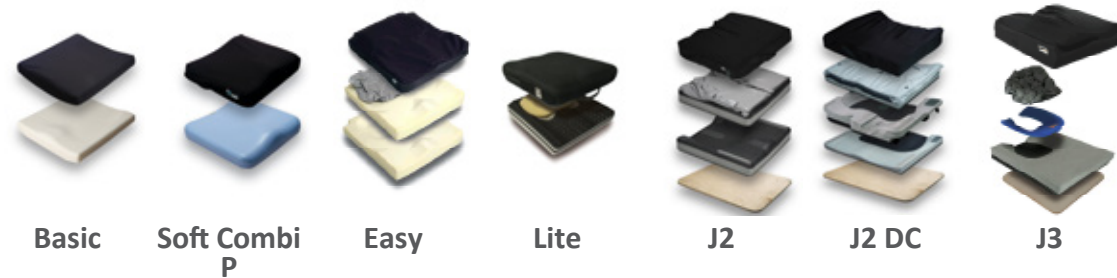


Order your JAY® Cushion and JAY® J3 Back shipped complete on-chair with any Quickie 2/2 Lite chair. Just check the boxes on the order form and save time and money!



JAY Cushions



JAY Backs



Versatile, modular, and lightweight folding chairs with features to fit your life!



**Quickie 2
Quickie 2 Lite**

Over the past 8 years, JAY engineers have commissioned 5 major scientific studies and actively work with a number of top researchers in the academic community. Our products may look simple in nature, but they are a synthesis of ideas from the best minds in the world. Here at JAY, we embrace the Science of Seating.

Quickie 2 Family Specifications

SPECIFICATIONS	QUICKIE 2 LITE	QUICKIE 2
Frame Style	Folding – Open	Folding – Traditional
Transport Weight	8 kg (Fixed-front)	8 kg
Overall Weight	9 kg (Swing-away) 12 kg (Fixed-front)	13 kg
User Weight Capacity	120 kg	120 kg (Standard) 160 kg (Heavy-duty)
Seat Widths	14" - 20"	12" - 22"
Seat Depth	14" - 20"	12" - 22"
Back Angle Adjustment	-14° - 5°	-15° - 3°
Front Seat To Floor Height	14.5" - 21"	15" - 21"
Rear Seat to Floor Height	13" - 19.5"	13" - 22"
Frame Angle	70°, 80°	N/A
Warranty	Limited Lifetime	Limited Lifetime
TGA	100167	100167

You drive our design. In development, we consider how you interact with the chair and how both can work as one to maintain maximum efficiency, performance, style and fit. Before you receive the chair, the product undergoes rigorous testing in addition to the required testing necessary for federal guidelines. Through our focus on these core elements: design, development and testing; we design these chairs for you and by you.

QUICKIE® 2 Lite

QUICKIE 2 Fit

Modular Design

- Simplified, interchangeable components and frames

Q-Fit™ Technology:

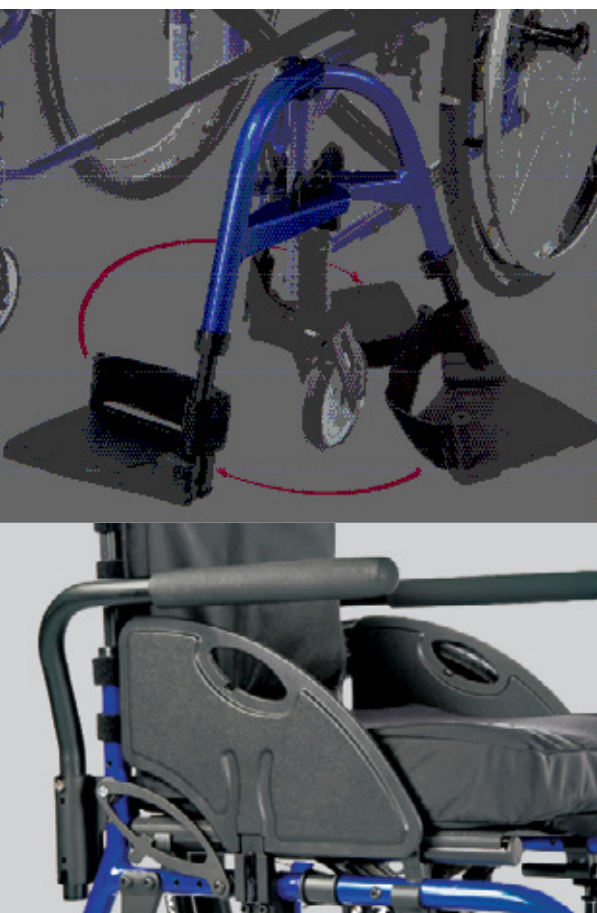
- Rigidity and performance for the life of the product
- Reduced noise in armrests and side guards providing a notably quieter ride

Quickie's True Fit Program

- If the need arises to significantly modify the chair, the True Fit program provides free parts within 5 years of original chair ownership .

A lightweight, simple package that offers an ideal option mix for our active users

- Simplified option mix
- Ultra Lightweight: 27.75 lbs overall - Fully loaded!
- Fixed front frame option
- Smooth, contoured and natural style



QUICKIE® 2

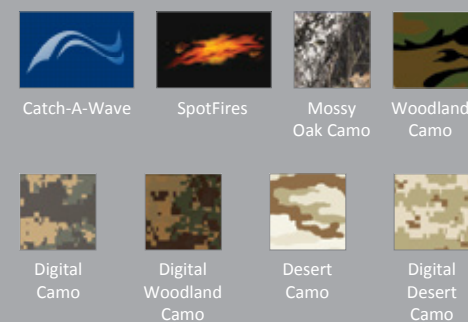
The industry's favorite folding chair for over 25 years.

Now with new innovations!

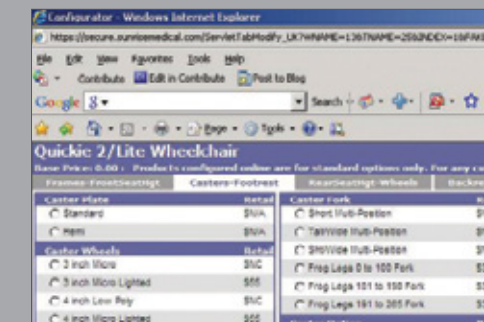
- New lightweight technologies with expanded options
- Over 64,000 possible rehab configurations
- Heavy duty frame option
- Depth adjustable backrest



New Kolorfusion™ Colors



Online Configurator



QUICKIE 2 Appeal

New Options

- NEW! Lite spoke wheel (No charge)
- NEW! Swing-in, swing-out hangers
- Front caster suspension
- Expanded rear wheel portfolio
- Expanded caster wheel and hub offerings

Color Options

- 20 standard paint colors
- 8 Kolorfusion™ color options including the NEW Spot Fires and NEW Catch-A-Wave

QUICKIE 2 Convenience

Easy to Order

- Online Configurator that follows the order form
- Bundle with JAY® cushions and J3 backs. It ships complete!

Easy Adjustments

- Major components were designed to minimize adjustment and set-up time

Transit Option

- Tested in accordance with WC19